

# UW HEALTH SPORTS FACTORY Fact Sheet

## BY THE NUMBERS

- 504,380 – Expected annual attendance
- 108,000 total square feet
- 96,000 square feet hard court surface
- Capacity: 3,700



## FACILITY FEATURES

### Championship Court

- Bleacher Capacity: 400;  
Total Spectator Capacity: 450
- 1 Basketball Court
- 2 Volleyball Courts

### North Courts

- 4 Basketball Courts
- 8 Volleyball Courts

### South Court Area

- 3 basketball courts
- 6 volleyball courts

### Outdoor Areas

- River path featuring bump-out areas overlooking Rock River
- South Patio Area featuring tent and seating areas

### Owly Oop Restaurant/ Concession

- Concession open in June 2016; restaurant open in July 2016
- Owned and operated by Prairie Street Brewing Co.
- Capacity: 160
- 180-degree view over Rock River
- North and south courts visible from restaurant

### Main Level Features

- Vestibule/main lobby area
- Offices
- Concessions

### Facility Parking

- 442 spaces total
- Lower lot: 130; upper lot: 312

### Meeting Spaces

- Lower meeting spaces – spaces can be partitioned into 4 rooms; total capacity: 80
- Upper meeting space – Capacity: 45



**UW HEALTH  
SPORTS  
FACTORY**

A facility of the



**ROCKFORD  
PARK DISTRICT**

## PROGRAMMING

- Volleyball – youth lessons, leagues, and camps; adult leagues
- Basketball – youth lesson and leagues; adult leagues
- Wheelchair basketball – youth and adult practices
- Adapted boccia ball practice
- Private rentals

[rockfordparkdistrict.org](http://rockfordparkdistrict.org)  
(click MyRPD)

## TOURNAMENTS

June 2016–May 2017

- 46 basketball
- 2 wheelchair basketball
- 11 volleyball
- 2 table tennis

[rockfordhoops.com](http://rockfordhoops.com)  
[rockfordvolleyball.org](http://rockfordvolleyball.org)



## CONTACT

**ADDRESS:** 305 S. Madison St. – Rockford, IL

**OFFICE HOURS:** 10:00 AM–6:00 PM

**FACILITY HOURS:** Varies, depending on scheduled events

**PHONE:** 815-966-8770 • **WEB:** [uwhealthsportsfactory.com](http://uwhealthsportsfactory.com)

# SOUTH COURTS

1

2

3

# NORTH COURTS

4

5

6

7

West

West

West

West

West

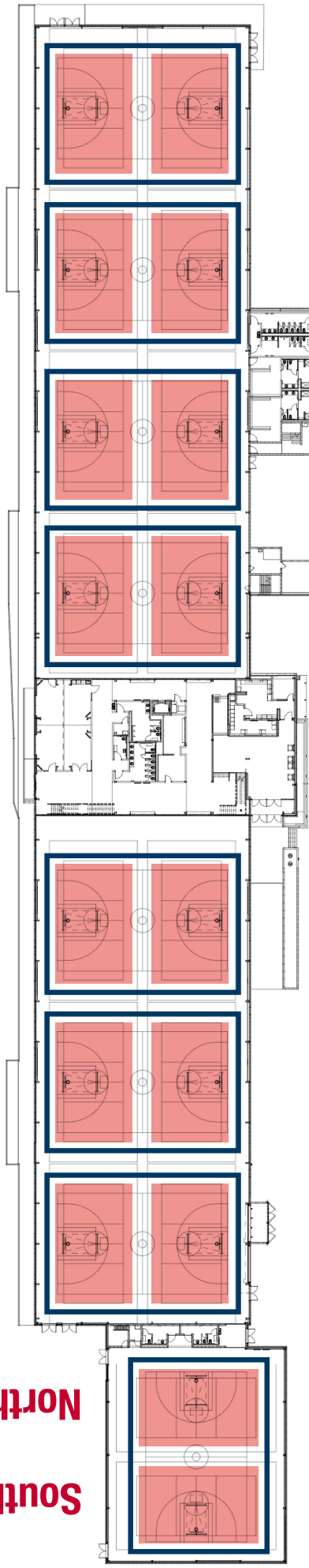
West

West

West

West

South  
North



East

East

East



East

East

East

East

# CHAMPIONSHIP COURT

# LOBBY + CENTRAL CORE

